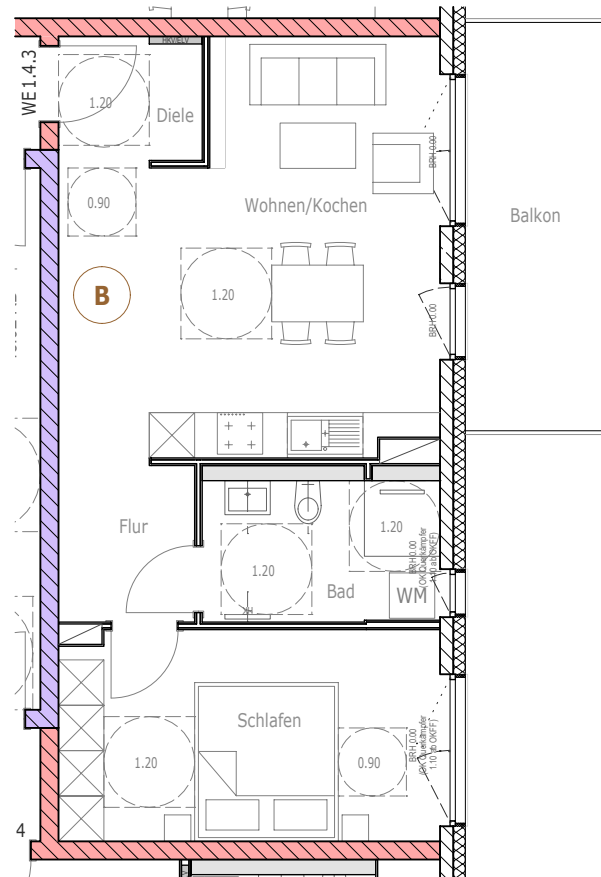
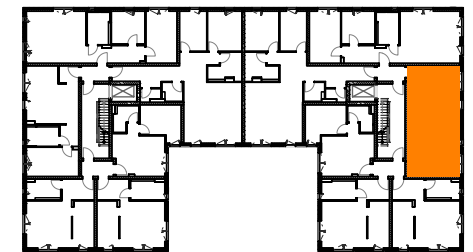
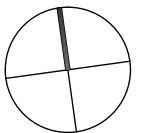


Wohnung 1.4.3 (Apt. 39)

Abst.	2,21
Bad	6,48
Balkon	5,46
Diele	2,08
Flur	2,47
Schlafen	14,35
Wohnen/Kochen	25,10
Summe Wohnfläche	58,15



B barrierefreie Wohnung



Handjery Friedenau Living

Grundriss 4.OG

06/07/2020

Maßstab 1:100

Ten Brinke
Group